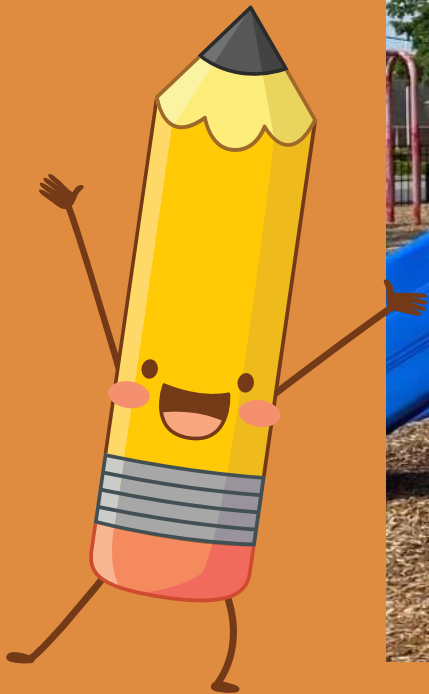


Weddington Christian Preschool

# Parent Orientation

September 13 & 14, 2022



# Welcome Parents!

- WCP is a ministry of Weddington United Methodist Church.
- 2 campuses-Weddington & Bonds Grove
- Director: **Sherri Martinez**
  - Church Member for 17 years
  - National Board- Certified Teacher-Early Childhood Generalist (Ages 3-8)
  - Elementary Teacher for 13 years
  - 4<sup>th</sup> year here at WCP
- Asst. Director-Weddington **Emily Gray** (tuition payments, summer camp, curriculum) 10 years at WCP
- Asst. Director-Bonds Grove **Jamie Edmondson** (fundays at BG)



# What to Bring

A full-size backpack (no rolling bags) large enough for your child's belongings which include:

- Lunch (all labeled/snack is provided)
- A labeled water bottle
- A full change of seasonally appropriate clothes in a gallon-size bag
- Communication Folder (folder is provided)
- Diapers-Toddlers/2's (3 labeled diapers; wipes are provided)

**\*LABEL EVERYTHING!!! EVERYTHING!!**

**\*Toddlers and 2's do not carry their own backpack**

**\*Play clothes that are easy to manage and close-toed shoes are the best choices!!**

# Map of Lower Lot

---



# Map of Lower Lot

---



# Car line

---

- 9/19 and 9/20; park and walk-up right outside the building for arrival and dismissal while children practice being in their car line spots inside the building
- A map with instructions will be sent home. We utilize the lower parking lot to group you by orange or green tags.
- **Everyone must enter at the light at Lenny Stadler Way** which goes behind our Family Life Center and ends at a stop sign. You will turn right and then turn into the first entrance of the lower parking lot. You can not enter our campus by going up the steep hill.
- **2's/3's have orange signs and will hug the outside the parking lot. 4/s and TK have green signs and wind through the middle of the lot.**
- **You will be directed to exit the lower lot and enter the upper lot.** 4's/TK will load/exit on the far side of our building and 2's/3's will exit on the closer side of the building.
- Carline will begin at 8:45-9:06 arrival & 12:45-1:05 dismissal
- We need to end carline at 9:06 to allow children to get on with their day. If you arrive after we conclude carline, you will be directed to park at the preschool entrance and walk your child to the door.
- Anytime you arrive late or need to pick up early, please come to the preschool entrance and we will take your child to class or get them from class.

# Carline cont'd

---

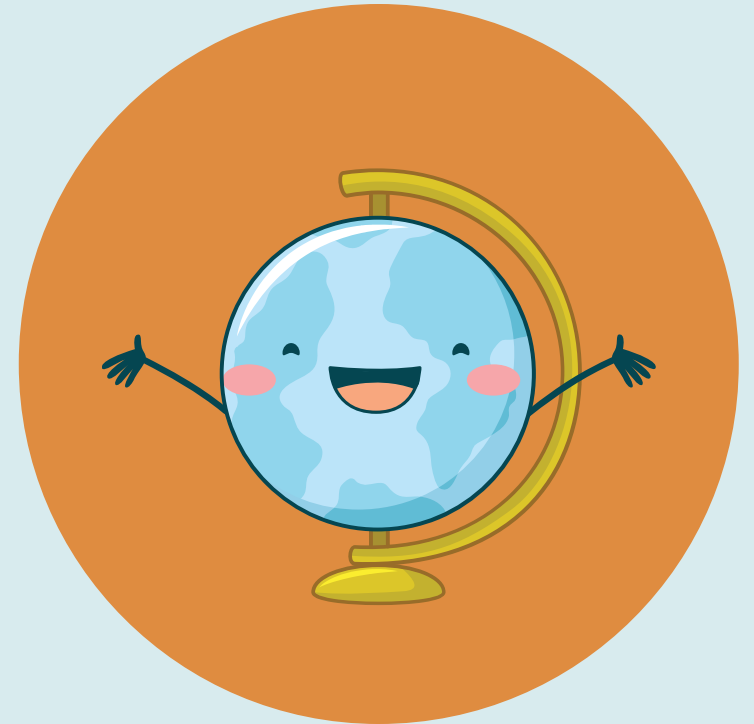
- Keep your sign visible during carline. Be attentive!
- A staff member will walk your child to and from the car. Please make sure your child is ready to exit the car.
- Please do not get out of the car.
- Children will need to enter/exit the car on the right side. If children need assistance unbuckling, we need the car seats on the right side of the car.
- We cannot put a child into the car without a visible car seat.
- Once your child is brought to the car, you will pull forward to the loading area, jump out and buckle your child in.
- Exiting

## **Sometimes we need to stop or pause carline:**

- Emergency
- Weather
- Fire Alarm

# Communication

- Check your child's communication folder daily
- Read weekly emails from WCP-school information
- Read weekly teacher emails-class information
- Send an email to your child's teacher or write a note and place in folder.
- Shutterfly/Facebook
- Parent Conferences in January
- Keep in mind, your teacher is actively engaged with the children in the class during the preschool day.
- Call the preschool office during the preschool day if you need assistance.





# Allergies



We have children in our preschool community who have severe allergies to **nuts-peanuts and tree nuts and eggs**.

We ask that **you do not send food in your child's lunch that contains nut products-including peanut butter, almond butter and Nutella**. It is so much more difficult for us to thoroughly clean all traces of these spreads from little bodies and tables and chairs.

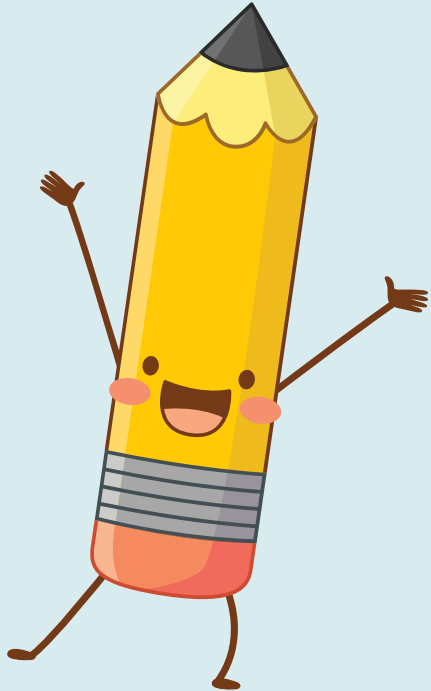
Special treats for birthday celebrations and/or holiday parties:

**All items must come in the original, unopened packaging with a label.**

For the safety and enjoyment of all our students we must request that you only send in treats with packaging that clearly states **"Does not contain nuts" AND "Made in a Nut-Free Facility."**

Harris Tetter, Walmart, Target and Publix all have options-please read labels carefully!!

# Sick Policy



It is required that children with the following symptoms remain home:

Fever within last 24 hours, unidentified rash, or cold

Vomiting or diarrhea within last 24 hours

Deep cough or sore throat

Contagious/communicable disease (chicken pox, strep throat, impetigo, conjunctivitis (pink eye), pneumonia, flu, fifth disease, hand/foot/mouth, head lice, cytomegalovirus, molluscum contagiosum, mumps, measles, ring worm, etc.)

Matted or runny eyes

\*If your child is exposed outside of school and is symptomatic or has tested positive for Covid-19, we will continue to follow state and county health department guidelines to determine when your child can return to school. If your child is exposed at school, parents will be notified by email.

# Afterschool Program & Fundays at BG

---

## **Afterschool Program-Weddington Campus** for 3s/4s/TK classes

- Deadline has passed-September 8th
- Most classes will start the last week of September.
- Ms. Jenny, the afterschool coordinator will be sending out info to all registered families very soon.

## **Fundays-Bonds Grove Campus** for all age-levels except toddlers-6 days selected per semester-most are Fridays with a couple of exceptions

- Jamie Edmondson is the coordinator for Fundays at BG
- Deadline has passed to participate in first semester-Sept. 9

Both programs are offered again second semester

# Curriculum Notes

**Developmentally Appropriate Practice:** teaching in ways that match the way children develop and learn, so as to promote their optimal development and learning.

## **Learning Without Tears**

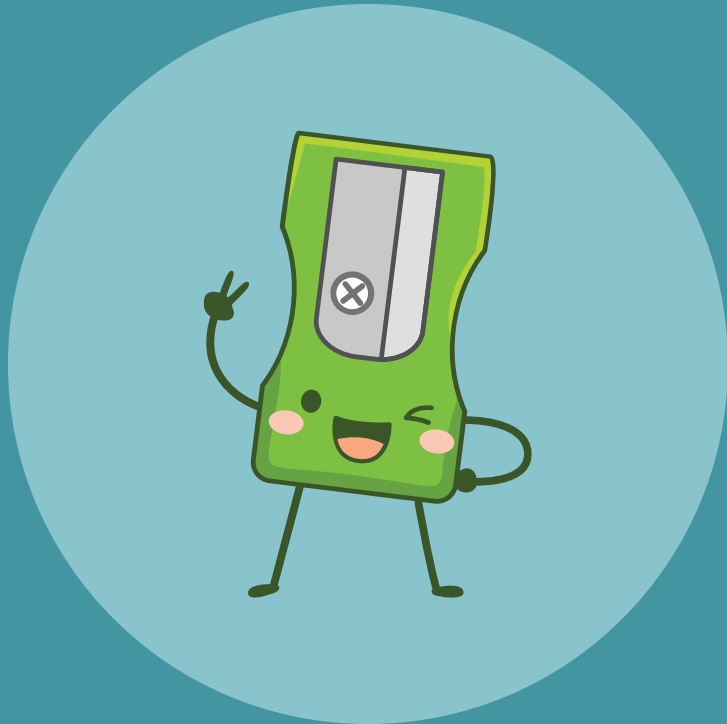
Through play, explicit instruction including hands-on instruction, children develop early literacy skills in these five domains-

- Phonological Awareness
- Alphabet Knowledge
- Concepts About Print
- Comprehension
- Writing

## **Bible**

Monthly Bible verses and Bible Stories

# Creative Curriculum Purposeful Play



Constructive, purposeful play serves many purposes and provides an excellent vehicle for learning.

When children are provided opportunities to engage in high amounts of child-initiated, free-choice activities supported by a variety of equipment and materials to explore, those children performed better on cognitive and language tasks at age 7 than their peers who did not have such opportunities.

Purposeful and productive play is positively related to

- Self-regulation skills
- Vocabulary/Memory development
- Symbolic thinking
- Positive approaches to learning
- Language and literacy skills
- Math skills

# Areas of Development



**Social-Emotional Development**-next slide

**Physical Development**-Gross Motor (large-muscle) and fine-motor (small-muscle) skills, balance; coordination and traveling skills

**Language Development**

**Cognitive Development**-The child's ability to process information, remember, classify and solve problems, acquire language, read, and understand mathematics

# Social-Emotional

Social-emotional development involves learning how to understand your own and others' feelings, regulate and express emotions appropriately, build relationships with others, and interact in groups.

These crucial skills have been found to predict successful kindergarten transition, early social success, and even later accomplishments in the workplace.

Social-emotional development is equally important as academic content for achieving long-lasting positive results.

Objectives:

- Regulates own emotions and behaviors
- Establishes and sustains positive relationships
- Participates cooperatively and constructively in group situations.

# Notes

---

WCP T-Shirt Orders: **Due by Sept. 22**

**VIP Committee Sign-up:** Volunteer Committee which supports the preschool

- VIP Chair-Meghan Woodcox (merwoodcox@gmail.com)

Harris Teeter VIC Together in Education Program

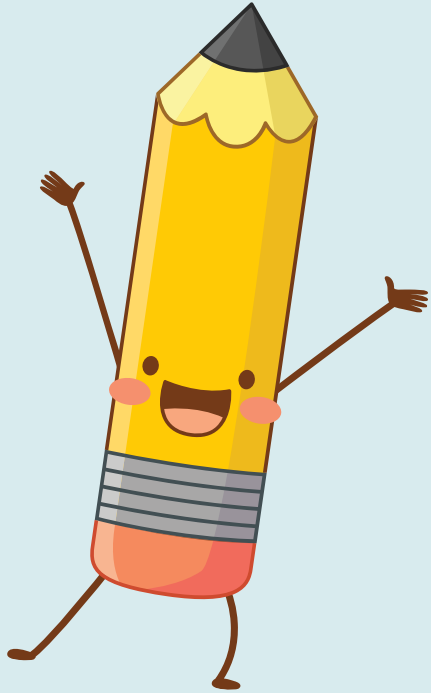
- School code 5584

Field Trip to Hunter Farms for Weddington Campus and Aw Shucks for Bonds Grove Campus in October

WUMC Church Involvement



# Weddingtonchurch.org/wcp



You can find the following on our website:

- Parent Handbook
- School Calendar
- Afterschool Enrichment Program Information
- Fundays at Bonds Gove Information
- Forms and Policies
- Registration Information
- Tuition and Class Information
- Payment Options
- Summer Camp-we offer 3 weeks of camp

Don't forget to follow Weddington Christian Preschool on Facebook!